

China Freezing Point Diode Laser for Hair Removal(LY-DL2)



Function:

1. Hair Removal

Get rid of unwanted hair like lip hair, beard, armpit hair, hair on arms, legs and bikini area. Suitable for both light and dark skin.

2. Skin Rejuvenation



Before



After



Before



After



Before



After



Before



After

Applications:

For fast, safe, painless and permanent hair removal on all 6 skin types, including dark skin. Suitable for any unwanted hairs on areas like face, arms, armpits, chest, back, bikini, legs...

Back hair



Bikini hair



Arm hair



Thoracic and
bristles hair

Armpit hair

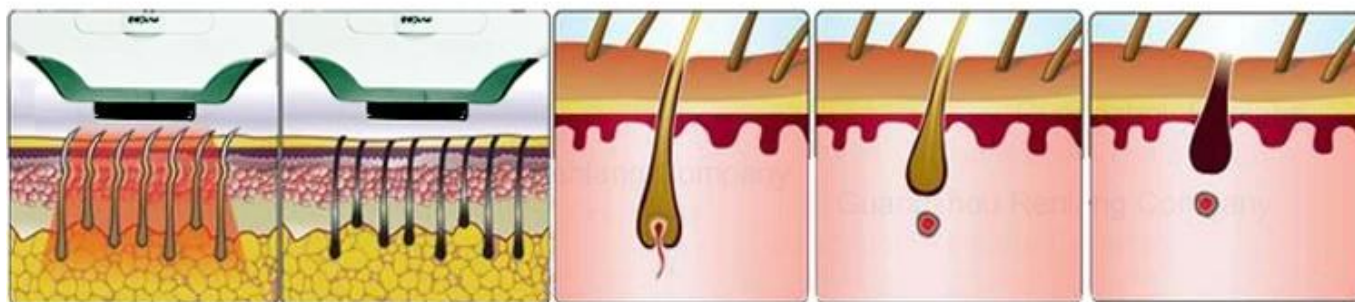


Leg hair

Working theory:

1. The instrument can effectively penetrate to the targeted tissue, and the appropriate laser pulse time can ensure the accumulated energy to break the targeted tissue without damaging the surrounding tissues.
2. The appropriate energy density can provide enough energy output in a certain time to break the targeted tissues without damaging the surrounding tissues.
3. The appropriate epidermal protection measure can ensure enough damage of the targeted tissues without damaging the surrounding tissues.
4. The multi-pulse laser of this semiconductor laser hair removal series chooses the mode of a relative low energy density to heat mascara to

75°C, and maintain this state with the hand tools sliding under 10Hz, then both the hair follicle and stem cell growth will become inactive, reaching the goal of permanent hair removal.



Advantages:

1. Better customer experience

Cool and painless: Germany micro channel cooling technology realize freezing point hair removal, fully guaranteed the sapphire skin protection system keep at the temperature of 4°C.

Quick and complete: Large square spot increase the treatment area and covers all the corners of skin.

No hyperpigmentation: penetrate directly to the targeted tissue.

2. Safer

Skin temperature control: the cooling technology ensures the skin in comfortable condition.

No inflammation: the laser energy reach directly to the hair follicles without damaging the skin.

Latest technology: guaranteed by the latest technology in Optics Valley in China, where lies the high-density high-tech enterprises.

3. More efficient

Large spot: 12mm*16mm big spot make it more easier for large area hair removal.

User friendly: multi-language menu suitable for different operators

Accurate: High energy density output ensure it suit for all kinds of skin. Laser energy can reach deep hair follicles and be effectively absorbed.

Flexible: adjustable frequency, maximum output frequency is 10HZ

4. Longer service life

Cooling system: Air + Water + Diode + TEC Cooling. TEC is the latest

cooling method which widely use in refrigerator, this new cooling method can confirm the diode laser in a more suitable working environment and control it in low temperature even for long time continuously working.

Strict temperature control: if the temperature is over 35 degree, the machine will stop work, this can well protect the therapy handle safety, especially for the bars and crystal filter.

Taiwan imported power supply: the best power supply in the market, confirm the machine stable and energy enough.

Germany imported bars: confirm the shooting of the machine over 5,000,000 times and have enough energy.

5. Lower running cost

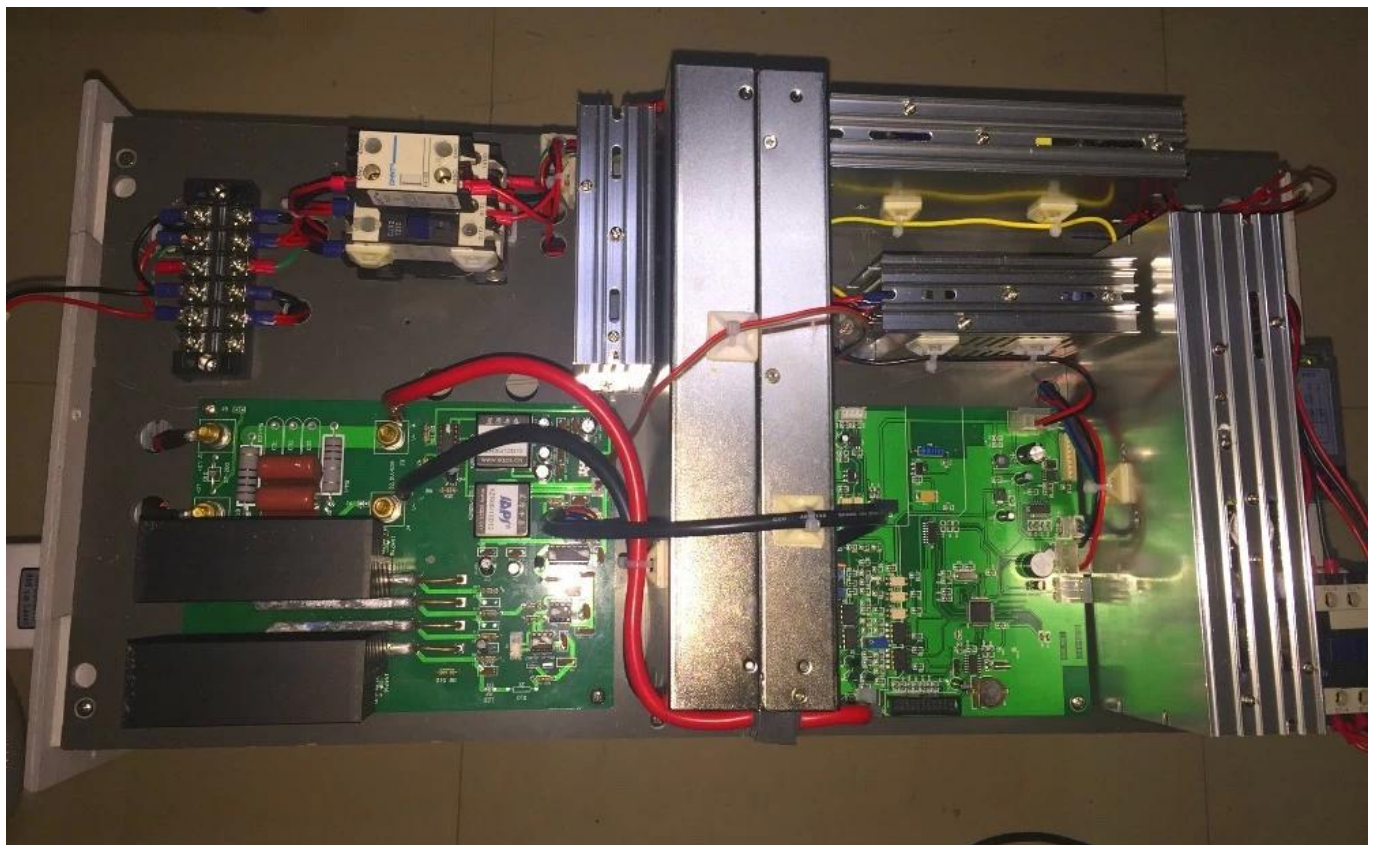
With less treatment time and longer service life, the unit running cost on each customer is considerably reduced.

6. In Lanyuan, you can find the most suitable machine for your beauty career

Customized function combination to meet different beauty purpose.

Various cases options to match different style in your work room.

Product detailed images:



Product descriptions:

Item	China Freezing Point Diode Laser for Hair Removal
Model No.	LY-DL1
Type	Laser
Laser type	Semiconductor/freezing painless laser
Q-Switch	No
Style	Stationary
Laser instrument working mode	Pulse mode
Cooling Fin	240*2
Wave length	808nm+10nm
Light spot size	10mm*16mm
Pulse width	10-300ms
Maximum energy of a pulse	3J-140J
Pulses energy	140J+10J
Laser instrument power	1200W
Input power	1600W
Working voltage	110V+ 10%,50Hz
OSD Language	Chinese, English
Insurance specification	Max 10 A
Size (Machine)	1180*500*385mm
Weight	≈51kg

Service:

1. Technical instruction documents.
2. Technical support by pictures, videos and online instruction.
3. Response within 24 hours.

Warranty:

One year warranty, life-long maintenance.

Our engineers technical support will be constant.

Package,Shipping&Delivery:

Package	Instruments well packed by styrofoam, air box or fumigation wooden cases.
Shipping	By air, by sea or by express.
Delivery	3-10 business days



Contact: Racher Cheng

Tel&Whatsapp: 0086-15527106178

Skype: sales2@lanyuansupply.com

Email: sales2@lanyuansupply.com